



TSL

biosciences
eastern and central africa



NEPAD
TRANSFORMING AFRICA



ILRI
INTERNATIONAL
LIVESTOCK RESEARCH
INSTITUTE



UNIVERSITY OF
EXETER
CGIAR



AfricaRice
Rice science at the service of Africa
La science rizicole au service de l'Afrique



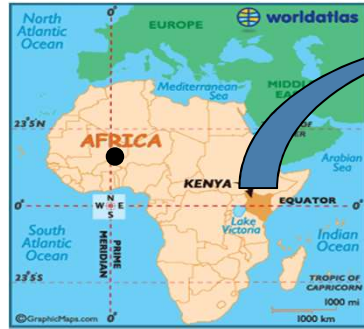
IRRI
INTERNATIONAL RICE RESEARCH INSTITUTE



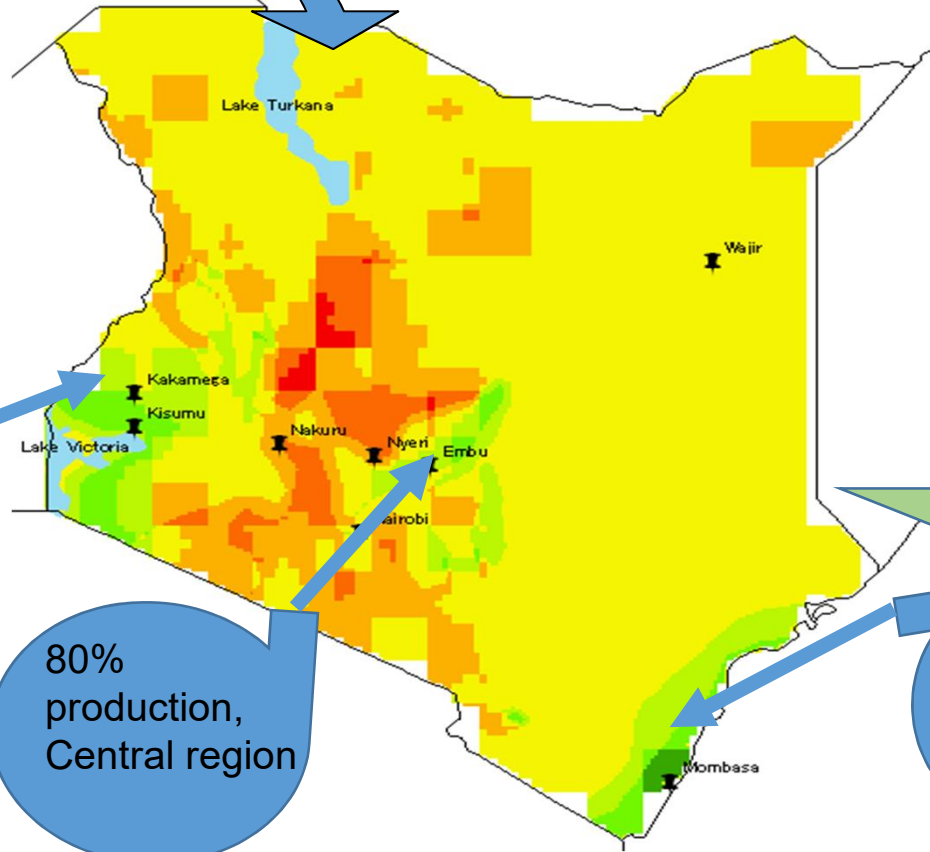
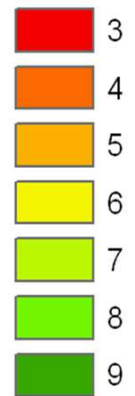
DIVISION OF AGRICULTURE
RESEARCH & EXTENSION
University of Arkansas System



Kenya Rice Production Suitability Map



Suitability



15%
certified
seed supply

15%
production,
Nyanza &
Western

45% certified
seed supply

80%
production,
Central region

5% certified
seed supply

5%
Production,
coast region

Contact experts: Kimani, J (john.kimani@kalro.org), Wandera, F; Thurair, D., Wasike, V., Otira, M., Kega, V., Nyamongo, D., Magoti, R., Ochieng, V., Kirigua, V., Wasilwa, L., Wayua, F., Mugambi, C., Ndungu, J., Too, A., Ngari, B., Musila, R., Esilaba A.O., Mutiga, S (ILRI-BeCA); Nyongesa, O (IRRI), Zhou, B (IRRI); Mitchell T. (OSU); Wang, G. L (OSU); Were, V (TSL); Ouedraogo, I (INERA); Rotich, F (UoEm); Correll, J. C. (UARK) and Talbot, N. J. (TSL). *E-Guide for Rice Production in East Africa (2019)*

BILL & MELINDA
GATES foundation

