

7. Near Infra Red Test

Type: Foss

Information Derived:

- ◇ Test done on wheat, maize and oil crops with various analytical outputs as desired by customer

Price:

1. Kshs. 200. 00 per sample



8. Atomic Absorption Spectrophotometry Test

Type: Shimadzu

Information Derived:

- ◇ Analysis macro and micro nutrients of food crop samples

Price:

1. Kshs. 1000.00 per sample



9. Chromatography Test

Type: Column

Information Derived:

- ◇ Beta carotene content

Price:

1. Kshs. 1000.00 per sample

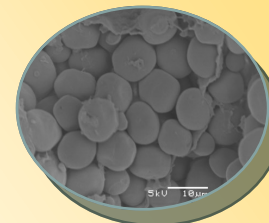


10. Spectrophotometry Tests

Type: Shimadzu

Information Derived:

- ◇ Phytic acid content
- ◇ Total Starch content
- ◇ Resistant Starch content
- ◇ Total Carotenoids
- ◇ Cyanide content
- ◇ Secondary metabolites



1. Kshs. 500.00 per sample for Phytic acid, total carotenoids and cyanide assay
1. Kshs. 2,500.00 for Total and Resistant Starch

11. Any chemical and biochemical test on food and cash crops

12. Food and Feed safety surveys and analysis

13. Nutritional surveys and cataloging on food and feed samples

14. Training and capacity building e.g Grading courses on cereals and pulses

15. Consulting services

16. Other related services

FOR MORE INFORMATION, PLEASE CONTACT:

FOOD CROPS RESEARCH CENTRE - NJORO

Private Bag, Njoro, 20107

Tel: 020- 3510865 (wireless)

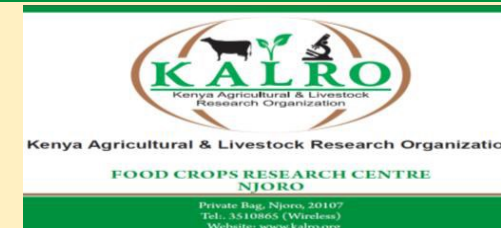
Or

JOHN N. NDUNG'U

0724 732 721

Website: www.kalro.org

Designed by Cheruiyot Lilian



CEREAL CHEMISTRY AND FOOD QUALITY LABORATORY



Service manual

1. Milling Test

Types: Buhler, Restch and Perten mills:

- Buhler Experimental Test for wheat
- Restch and Perten Mill for Nutritional based samples



Information Derived:

- ◇ Extraction rate
- ◇ Starch Damage
- ◇ Milling Energy
- ◇ Uncontaminated samples for nutritional analysis

Prices:

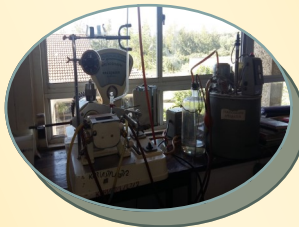
1. Kshs. 500.00 per sample for Buhler mill
2. Kshs. 500.00 per sample for Perten and Reistch mills

2. Farinograph Test

Type: Brabender:

Information Derived:

- ◇ Dough Development Time (DDT)
- ◇ Dough Stability
- ◇ Dough Tolerance
- ◇ Dough Water Absorption



Price:

1. Kshs. 1000.00 per sample

3. Alveograph Test

Type:Chopin

- ◇ Information Derived:
- ◇ P/L Ratio
- ◇ Stability

Deformation Energy

Price:

1. Kshs. 500.00 per sample



4. Baking Test

Type:

Information Derived:

- ◇ Loaf Volume
- ◇ Loaf Weight
- ◇ Crumb size
- ◇ Crumb Texture
- ◇ Crumb Color
- ◇ Crust Color
- ◇ Taste analysis

Price:

1. Kshs. 1000.00 per sample



5. Protein Analysis

Type: Kjedhal:

Information Derived:

- ◇ Nitrogen content
- ◇ Protein content

Price:

1. Kshs. 500.00 per sample



6. Falling Number Test

Type: Foss:

Information Derived:

- ◇ Alpha Amylase Enzyme content
- ◇ Storage type and time
- ◇ Bread quality information

Price:

1. Kshs. 500.00 per sample

