

- Scouting for diseases for timely control
- Sterilize farm tools with e.g jik (50ml/litre water) to prevent spread
- Avoid injuring plant roots, corm, trunk during weeding as these serve as pathogen entry points
- Controlling flow of surface run off away from fields by digging trenches
- Destruction of infected plants / mats by burning
- Use of Trichoderma based biological control agents such as Rootgard, Trichotech, Mazao sustain, Trianum-P etc as a root dip at planting
- Soil drenching of affected fields with Trichoderma based biological products and carbendazim based synthetic fungicides, according to manufacturer's recommendations

Complied by: Ruth Amata., Anthony Nyaga
and Lusike Wasilwa

Edited by: Nyabundi, K.W.

Design and Layout: Nogrecia Mnene

For further information, contact:

The Centre Director
KALRO-FCRC Kabete
P.O. BOX 14733- 00800, Nairobi
Email: cd.narl@kalro.org
Phone: +254 711301517

KALRO Call Center: 0111010100

KALRO/NAVCDP/BANANA/ Brochure No. 153/2024

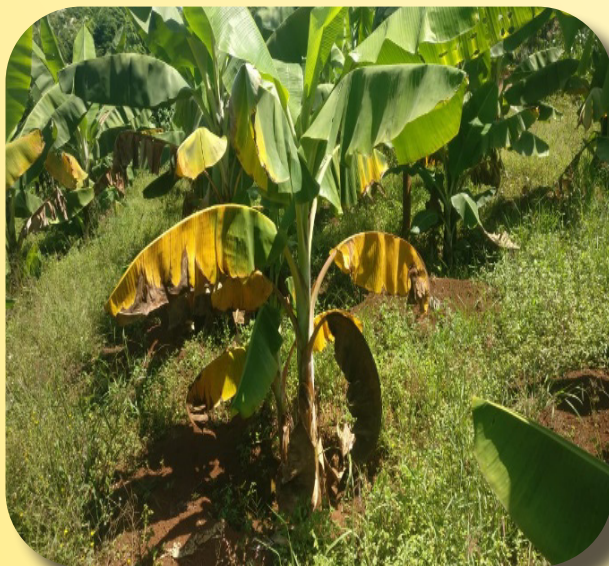


INTEGRATED MANAGEMENT OF FUSARIUM WILT DISEASE OF BANANA



Introduction

Bananas is an important crop grown mainly by smallholder farmers in Kenya. Fusarium wilt is one of the major diseases affecting banana. The disease is caused by a fungus (*Fusarium oxysporum* fsp. *cubense*). Losses of up to 100% have been experienced by farmers, due to this disease. Hence the need to accurately diagnose and manage it.



Yellowing of outer older leaves of a plant infected by *Fusarium* wilt disease. (Source: Ruth Amata KALRO)



Cross section of pseudostem of banana showing browning of vascular system of an infected plant. (Source: Ruth Amata KALRO)



Splitting of lower part of the pseudostem of a plant affected by *Fusarium* wilt. (Source: Plant village.psu.edu)



A plant affected by *Fusarium* wilt in later stages of the disease showing yellowing / browning and drying of leaves. (Source: Ruth Amata KALRO)

Symptoms of *Fusarium* wilt disease of banana

- Yellowing of leaf margins and advancing towards midrib. This yellowing starts in the older leaves
- Leaves turn brown, dry, and eventually collapse
- Splitting at the base of the pseudostem
- Browning of the vascular system

Management of *Fusarium* wilt disease of banana

- Use of disease free planting materials
- Plant the clean seedlings in clean fields
- Crop rotation when establishing new orchards